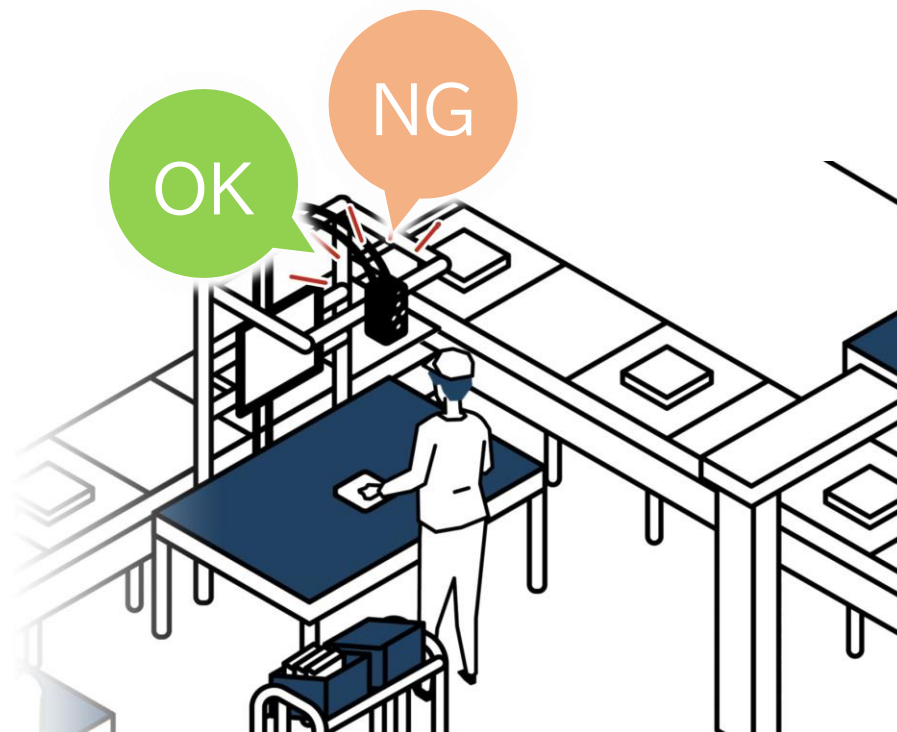


Work Inspection Camera

RICOH SC-20

Inspection
"OK" or "NG"
Work Inspection
Judgment Flow

RICOH
imagine. change.



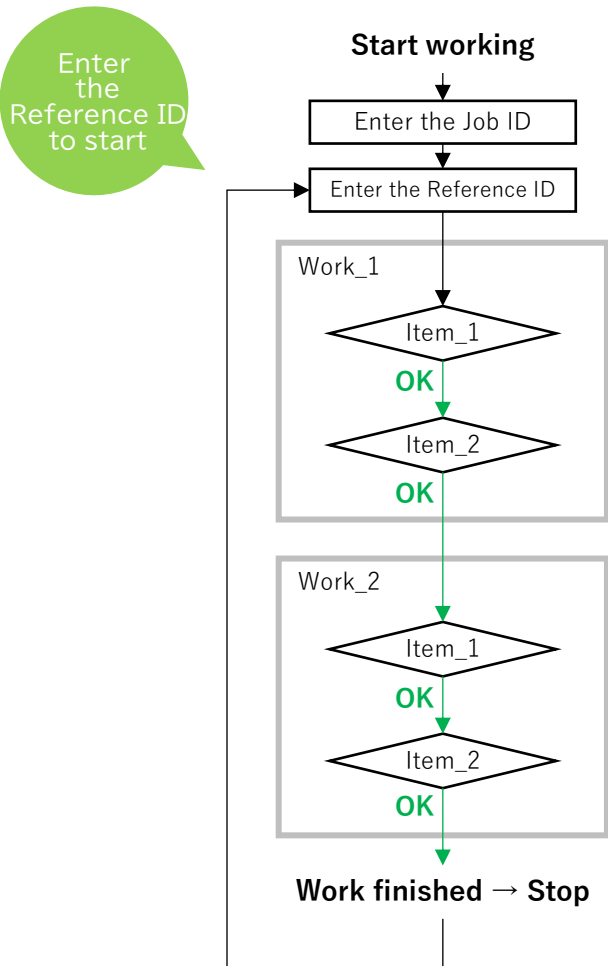


Work Inspection Judgment Flow

[In case of OK judgment]

Flow with default settings

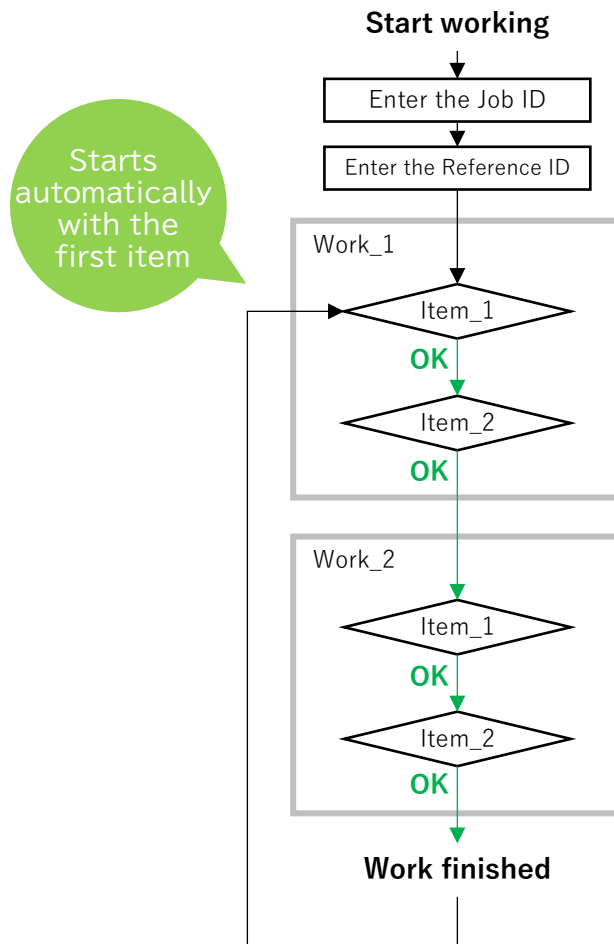
When the judgment of an item is OK, the inspection moves to the next item in sequence.
When all the items are OK, the inspection stops and the next Reference ID is entered to start the inspection.



Flow when "Infinite Loop Mode" setting is ON

When the judgment of an item is OK, the next item is sequentially inspected.
When all the items are OK, the inspection is automatically started from the first item in the sequence.

[Click here to see how to set "infinite loop mode".](#)





Work Inspection Judgment Flow

[In case of NG judgment]

Flow with default settings

Standard settings

「Restart from the first item when failed」 settings

When a NG judgment is made on a specific item, the system stops once. Clicking the **Start** button restarts the inspection from the same item.

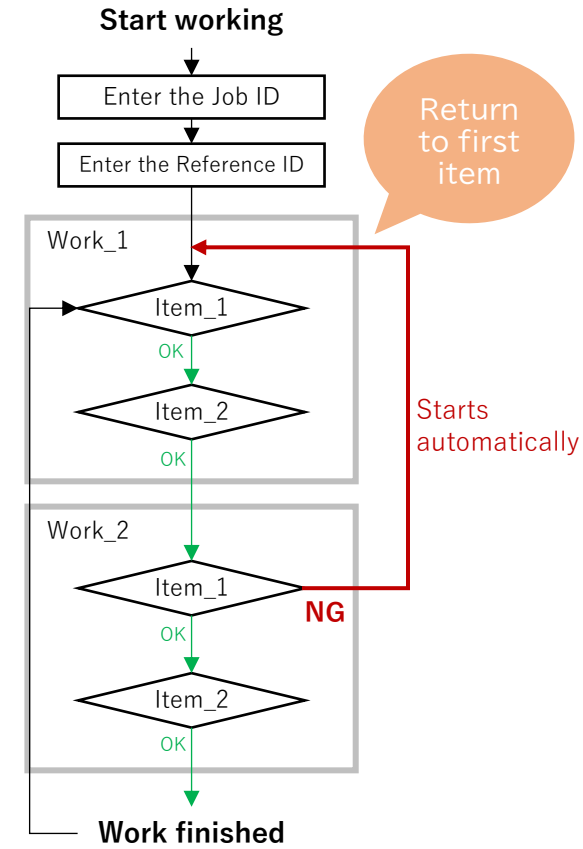
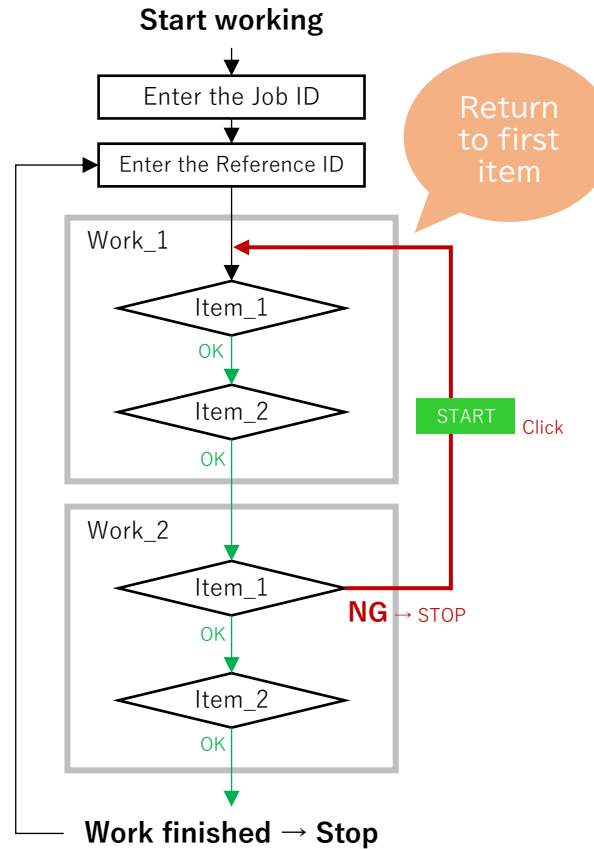
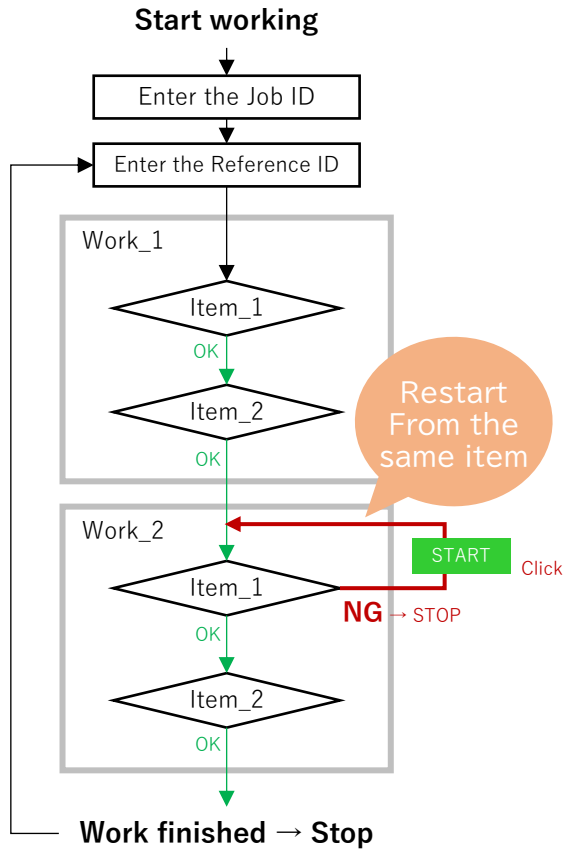
When a NG judgment is made on a specific item, the system stops once. Clicking the **Start** button will return to the first item and resume the inspection.

Click here to see how to set "Restart from the first item when failed".

Flow when "infinite loop mode" setting is ON

If an NG is found for a particular Item, the inspection will not stop, but will return to the first Item and automatically resume the inspection.

Click here to see how to set "infinite loop mode".



How to Change Work Inspection Judgment Flow Settings

How to set "Restart from the first item when failed"

File Job Settings System Se

Job ID Settings ...

1 Alias Settings ...

Other Settings ...



Other Settings

Internal Preset

2 Restart from the first item when failed

User Mode Settings

Do not display the confirmation dialog

Disable the Next button

Disable the Back button

Disable the Change Job ID button and menu

Disable the Change Reference ID menu

Display a password input dialog when failed

Continue beeping until a value is input

Other Settings

How to set "Infinite Loop Mode"

File Job Settings System Se

1 Job ID Settings ...

Alias Settings ...

Other Settings ...



Job ID Settings

Job ID List

Default

2 Enable

Infinite Loop Mode

Production volume management

Enable

Infinite Loop Mode

Production volume management

Exposure

Gain

3

Shutter Speed

29.641

White Balance

Gain R

1.631

Gain B

2.454

Gamma

Curve Value

2

Filter

Denoise

1

Sharpness

1

WDR

Inverted

Apply

Instruction Step File